

**Mahatma Education Society's  
Pillai College of Arts, Commerce and Science (Autonomous)  
New Panvel**

PCACS/IQAC/RPT/2019-20/T2

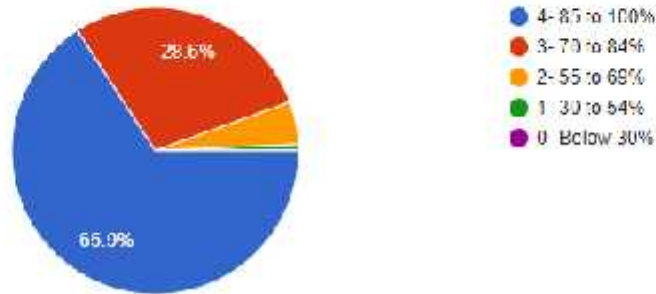
**INTERNAL QUALITY ASSURANCE CELL (I.Q.A.C.)**

**COMPILED REPORT  
on  
STUDENTS SATISFACTION SURVEY (2019-20)**

**Student Satisfaction Survey on Teaching Learning Process**

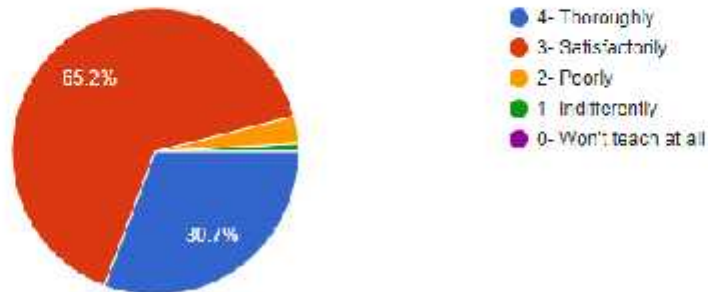
1). How much of the syllabus was covered in the class?

1,491 responses



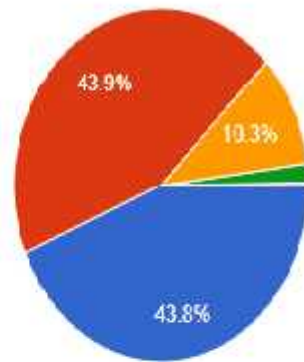
2). How well did the teachers prepare for the classes?

1,493 responses



3). How well were the teachers able to communicate?

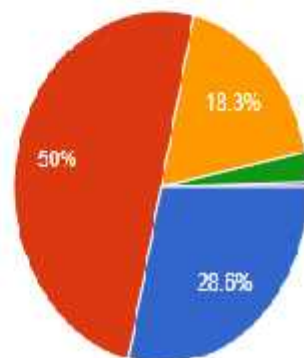
1,492 responses



- 4 – Always effective
- 3 – Sometimes effective
- 2 – Just satisfactory
- 1 – Generally ineffective
- 0 – Very poor communication

4). The teachers' approach to teaching can best be described as

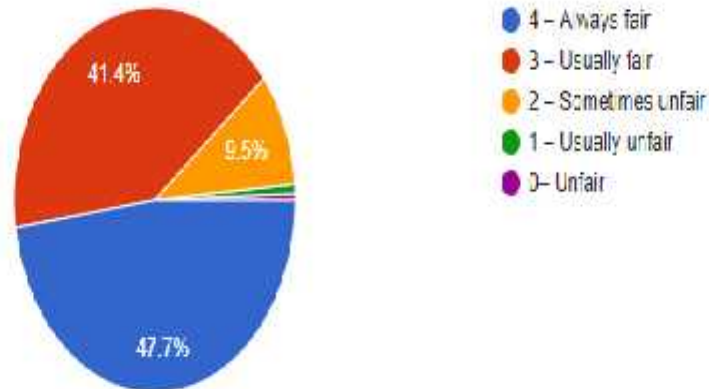
1,492 responses



- 4 – Excellent
- 3 – Very good
- 2 – Good
- 1 – Fair
- 0 – Poor

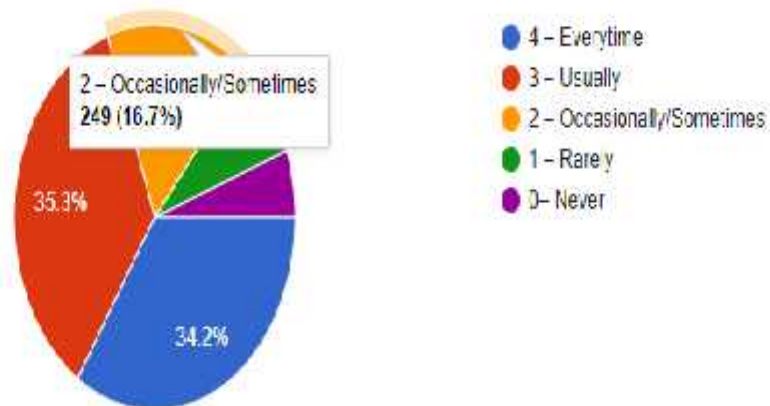
5). Fairness of the internal evaluation process by the teachers.

1,490 responses



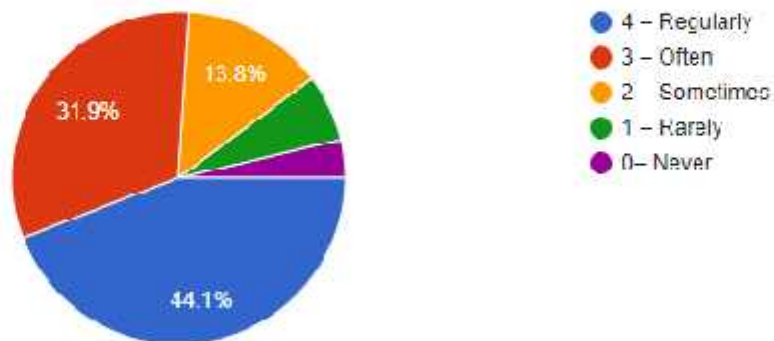
6). Was your performance in assignments discussed with you?

1,490 responses



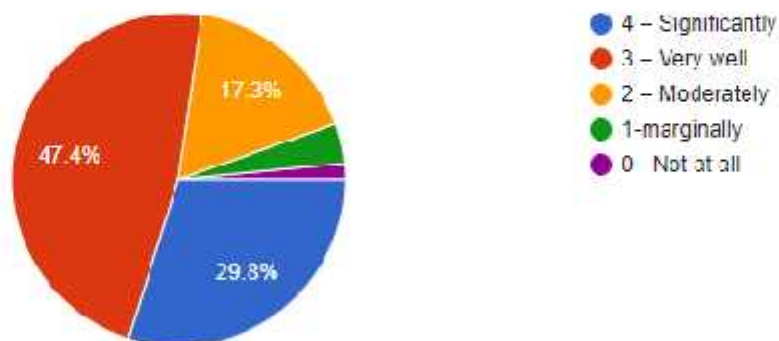
7). The institute takes active interest in promoting internship, student exchange, field visit opportunities for students.

1,491 responses



8). The teaching and mentoring process in your institution facilitates you in cognitive, social and emotional growth.

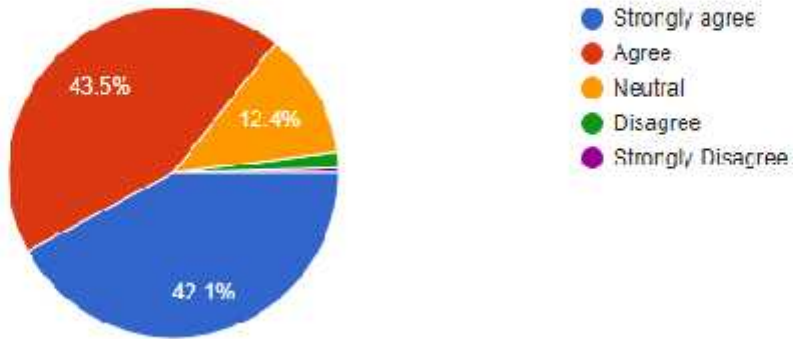
1,489 responses



9). The institution provides multiple opportunities to learn and grow.

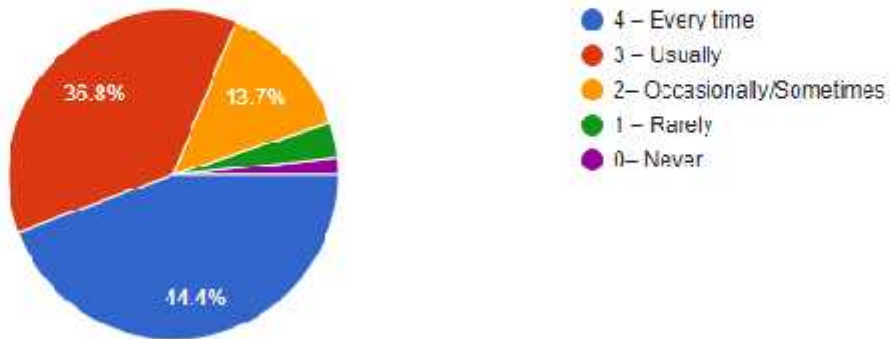


1,488 responses



10). Teachers Inform you about your expected competencies, course outcomes and programme outcomes.

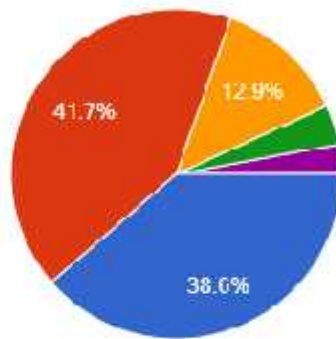
1,488 responses



11). Your mentor does a necessary follow up with an assigned task to you.



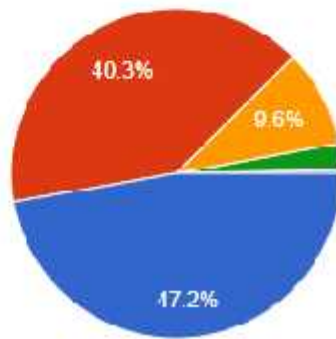
1,491 responses



- 4 - Every time
- 3 - Usually
- 2 - Occasionally/Sometimes
- 1 - Rarely
- 0 - I don't have a mentor

12). The teachers illustrate the concepts through examples and applications.

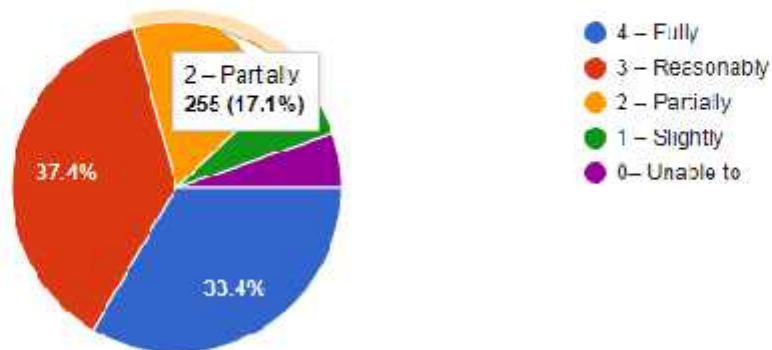
1,484 responses



- 4 - Every time
- 3 - Usually
- 2 - Occasionally/Sometimes
- 1 - Rarely
- 0 - Never

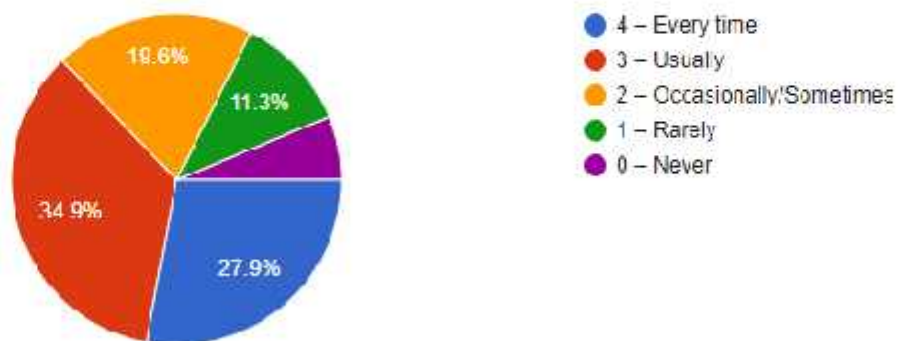
13). The teachers identify your strengths and encourage you with providing right level of challenges.

1,488 responses



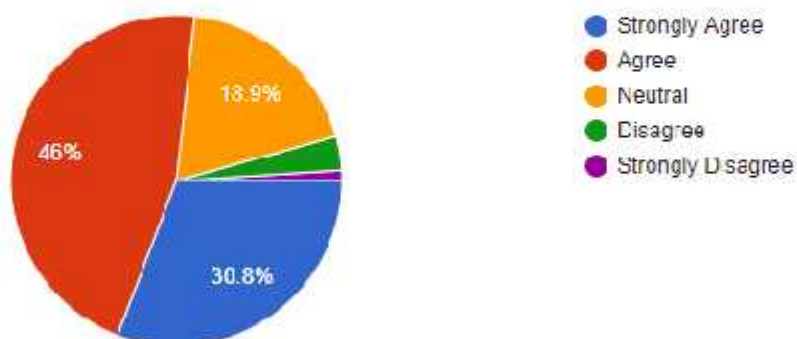
14). Teachers are able to identify your weaknesses and help you to overcome them.

1,488 responses



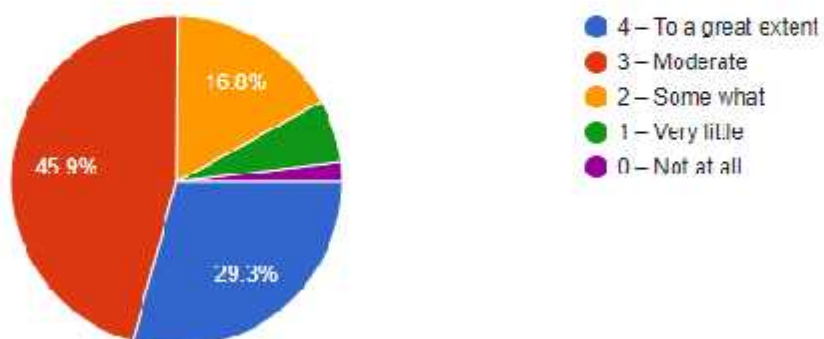
15). The Institution makes effort to engage students in the monitoring, review and continuous quality improvement of the teaching learning process

1,489 responses



16). The institute/ teachers use student centric methods, such as experiential learning, participative learning and problem solving methodologies for enhancing learning experiences.

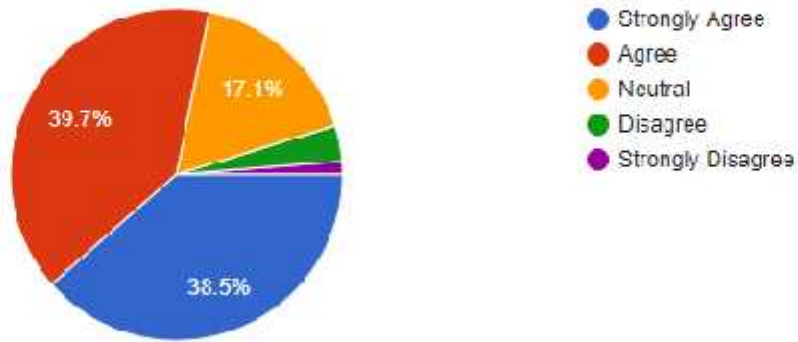
1,487 responses





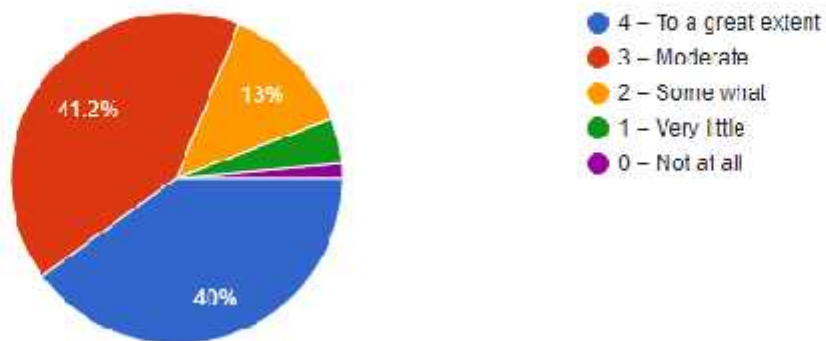
17). Teachers encourage you to participate in extra-curricular activities.

1,488 responses



18). Efforts are made by the institute/ teachers to inculcate soft skills, life skills and employability skills to make you ready for the world of work.

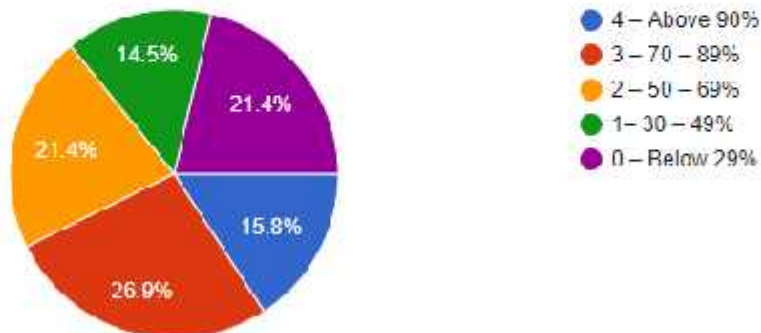
1,485 responses



19). What percentage of teachers use ICT tools such as LCD projector, Multimedia.google Classrooms, Sharing F-content, video lectures links, etc. while teaching.

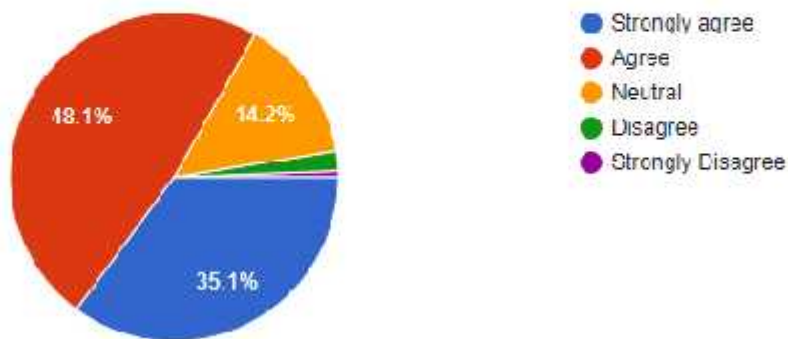


1,489 responses



20). The overall quality of teaching learning process in your institute is very good.

1,484 responses



**21). Give three observation / suggestions to improve the overall teaching - learning experience in your institution. (Compiled suggestions)**

- Teachers must use ICT tools more frequently to communicate and share knowledge.
- Teachers should give students an understanding about industry needs and expectations and also aid in transfer of those workplace-related skills with students.
- Internships must be given added thrust as they help in applying and developing academic concepts in a professional setting.
- Classroom environments should involve greater discussion, debate, peer interaction, and shared learning experiences.